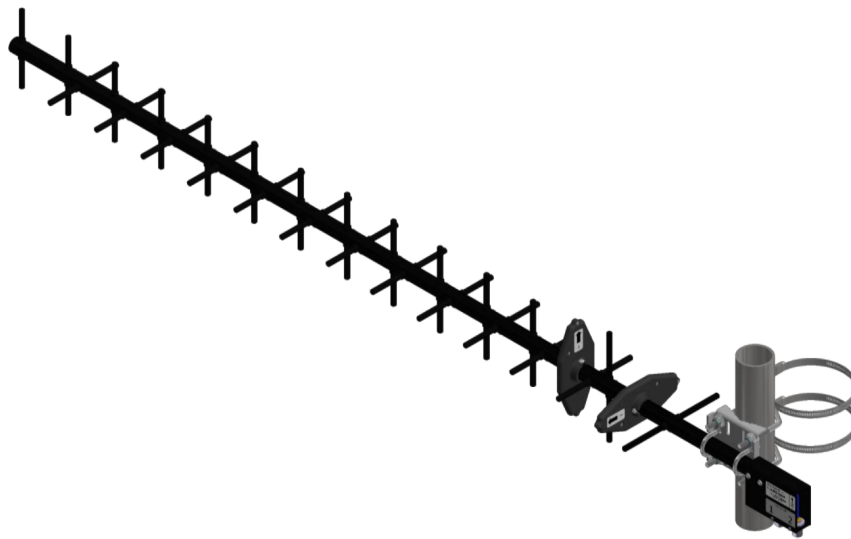


MIMO DUAL POLARIZED YAGI ANTENNA - 15dBi

700MHz Antenna Spec Sheet



The 700MHz Dual Polarized MiMO Yagi Antenna is a high gain, premium quality antenna with excellent port to port isolation. Manufactured using high strength 6061-T6 aluminum and anodized for aesthetic and corrosion resistance.

Key Features

- Dual linearly polarized
- Temperature range to -40°F to $+185^{\circ}\text{F}$
- Return loss $> 15\text{dB}$
- Port to port isolation $> 15\text{dB}$
- VSWR: $\leq 1.43:1$
- High gain: 15dBi

Benefits

- Seriously Smart
- Scalable
- Very Economical
- Highly Efficient
- Compatible
- Robust
- Exclusive to User
- Future Defensive
- Environmentally Sound

700MHz MIMO DUAL POLARIZED YAGI ANTENNA - 15dBi SPECIFICATIONS

Electrical Specifications	
Frequency Range	757-788 MHz
Polarization	Horizontal and Vertical
Gain	15 dBi
VSWR	≤ 1.43:1
Return Loss	> 15 dB
Port to Port Isolation	> 15 dB
F/B Ratio	> 15 dB
E-Plane 3dB Beamwidth	30°
H-Plane 3dB Beamwidth	35°
Average Power	200 W
Nominal Impedance	50 ohms

Mechanical Specifications	
Connector	2 x Type N-Female
Dimensions	66.8" x 8.0" x 8.0" (1695 mm x 203 mm x 203 mm)
Operating Temperature	-40°F to +185°F (-40°C to +85°C)
Mounting	Uses an BWC1017A mount
Elements	14 (per polarization)
Wind Rating	130 mph (209 kph)
Wind Rating (with 1/2" ice)	80 mph (129 kph)
Wind Loading	45.34 lbf (201.68 N) @ 130 mph (209 kph)
Wind Loading (with 1/2" ice)	47.26 lbf (210.22 N) @ 80 mph (129 kph)

Product Orders	
Product Code	Description
ANT-757-788-015-YD00	700MHz MiMO Yagi, 757-788MHz, 15dBi, 2 x N-Female

Important: Specifications are subject to change without prior notice

